



the JOHANNUS tradition

THE OFFICIAL
PUBLICATION OF
MAKIN ORGANS
AND JOHANNUS

NO 19
Spring 2009

MAKIN NEWS

Westmorland Village Organ: A Little Gem

We have all been there. We have all been persuaded to stand in and play for a service at Little Puddleton, St Mary which apparently has a magnificent and well maintained two manual organ of great historical value. Of course practice time in advance could not be arranged and on arrival you discover an organ that is out of tune, has never been maintained in living memory and has a stop that has been unused for years because the late vicar, who died 50 years ago, didn't like the sound it made. In a similar vein, during the Autumn Shades concert at Shaw, Professor Ian Tracey described how he came to play Widor's Toccata for a family wedding on a one manual organ with no pedals. Ian went on to explain that the new Makin Westmorland Village Organ was exactly what was wanted in venues such as these.

The 'Village' has a standard specification and is designed for installation in a village church, or as a home practice instrument. Professor Ian Tracey, Organist Titulaire at Liverpool Cathedral worked with Makin on the development of this instrument. This is an English instrument through and through but with the additional benefit of having French and Baroque intonations as well. The mixture compositions are varied according to the intonation, so for example sharp mixtures with Baroque whilst the French Great mixture has a tierce rank.

Ian said "The new Westmorland Village organ is an exciting break-through in tonal design of the smaller instrument, specifically intended for the modest church, hall or home. It is truly an organist's organ; and, whilst maintaining the traditional registers for church accompaniment, its English, French & Baroque tonal

Pedal		Mixture	III
Violone	16'	Trumpet	8'
Bourdon	16'	Swell to Great	
Principal	8'		
Flute	8'		
Trombone	16'	Swell (enclosed)	
Swell to Pedal		Gedackt	8'
Great to Pedal		Viola	8'
Great & Pedal Combinations Coupled		Voix Celeste	8'
		Gemshorn	4'
Great		Flageolet	2'
Open Diapason	8'	Mixture	III
Stopped Diapason	8'	Corno di Bassetto	16'
Principal	4'	Hautboy	8'
Chimney Flute	4'	Tremulant	
Fifteenth	2'	Octave	

Mixture Compositions	English	French	Baroque
Great Mixture III	12.19.22	15.19.22	19.22.26
Swell Mixture III	15.19.22	17.19.22	22.26.29



Professor Ian Tracey

options provide an inexhaustible tonal palette for all types of repertoire and occasion. It truly breaks the mould of the 'Village Organ', and any village organist could count himself exceedingly lucky to own one."

The organ comes with the usual accessories that you would expect from a Makin organ including a standard full size AGO pedalboard full range of departmental and general combination pistons with 32 memory levels, transposer, multiple temperaments, manual bass and much, much more. However, as with other Makin organs you will find no gimmicks. This is a serious organ for serious organists.



The Westmorland Village Organ designed in conjunction with Professor Ian Tracey

Stop Press! Stop Press! Stop Press!

Please visit the Makin website for some incredible limited time offers on Johannus and Makin organs.

Also, we have several very important dates for your diaries:-

Sounds of the Summer Concert at Mixbury with Professor Ian Tracey
Saturday 30th May (identical morning and afternoon programmes)

Free to attend, due to limited numbers please request tickets as soon as possible to avoid disappointment

Battle of the Organs at Leeds Parish Church

Wednesday 10th June at 19:30 with Professor Ian Tracey, Dr Simon Lindley, David Houlder and guests

Scotland Roadshow at Kinnoull Parish Church, Perth
Saturday 13th June (10:00 – 16:00)

Evening concert at Kinnoull by Professor Ian Tracey
Free to attend, please request tickets as soon as possible

Battle of the Organs at Marsden Parish Church

Wednesday 16th September 2009 at 19:30

Free to attend, please request tickets as soon as possible

Autumn Shades Concert at Shaw with Professor Ian Tracey

Saturday 10th October 2009 (identical morning and afternoon programmes)

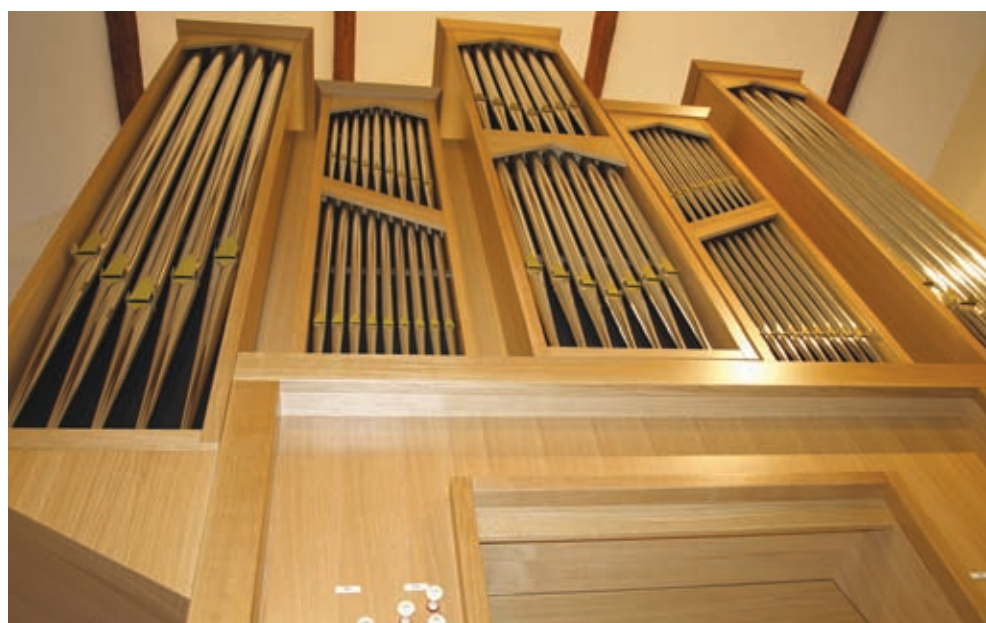
Free to attend, due to limited numbers please request tickets as soon as possible to avoid disappointment

Cornwall Roadshow at St Elwyn's Parish Church, Hayle

Saturday 21st November 2009 (10:00 – 16:00)

In this issue:

- The True English Organ
- Westmorland Gigue Organ
- The 'Sounds of the Summer' at Mixbury
- Customer Testimonials
- 'Autumn Shades' at Shaw
- Makin Professional Services
- It All Starts From A Report
- Cornwall Road Show
- Sounds of Marsden
- Sound Bites
- Recent installations



The new Westmorland Gigue Organ at Mixbury

The True English Organ

By James Harker

Perhaps I should begin by apologising to my fellow organists in Scotland, Wales and Ireland as I refer to the 'English' and not 'British' organ. Rightly or wrongly, this is how our organs are known worldwide, so I am following tradition. You do have my apology if this offends you in any way.



Whilst common on pipe organs, Swell Sub Octave, Unison Off and Octave are rarities on digital instruments

Makin Organs has always specialised in producing organs with an authentic English specification with the general aim that the organist, who is used to playing a pipe organ, can quite simply sit down and begin playing straight away. Our instruments are devoid of superfluous gimmicks. They will include the functionality often found on pipe organs, yet not included on many digital instruments that are not designed for the English market, or quite simply aren't up to the job. Here are some simple examples:-

Full English Chorus

There is something very unique about the English Diapason chorus with the carefully selected Open Diapasons at 8' as the basis. On an instrument with more than three 8' stops on the great, it is often the case that a second, and in some cases a third, Open Diapason is added to fully develop the 8' chorus. Such stops are always of a different nature to the first diapason and help link together the flute and diapasons chorus work, especially when the first Open is large in scale and volume.

Individual Enclosed Stops

Having a soft 16' pedal flue or reed can be very useful indeed for instances where the Bourdon or Trombone are simply too



'Great & Pedal Combinations Coupled' and 'General on Swell Toe Studs' are very useful accessories

big. Having such stops enclosed within a swell box (e.g. Swell, Choir or Solo) gives great versatility to the organ. Many examples are to be found in the specifications section of our website, but to give an idea here, you could have a soft 16' Contra Fagotto or 16' Echo Bourdon on the pedals enclosed within the Swell box.

True Organ Voicing

On a pipe organ it is very common for a Voix Celeste, or other similar undulating rank, to go down the compass to tenor C, below which there is no undulation. Our voicing gives the same effect you would expect to hear in a pipe organ, rather than continuing the undulation much lower. However, there is nothing preventing us ending the undulation on any other note of choice.



This graphical display shows many functions including the memory in use, volume, tuning, pitch, transposition, temperament and the position of the swell boxes

Solo Voices

Who can possibly deny that one of the finest moments you can have with the pipe organ is accompanying a psalm or soft music with the swell strings and then soloing out the melody on a fine sounding solo stop, such as a clarinet or orchestral oboe? Or indeed, for those rousing moments during the final verse of a hymn, drawing out the tuba? Well, with Makin organs, this is of course something we pride ourselves on. We have gone out of our way to sample only the finest solo stops available from some of the finest English pipe organ builders, so you know that when you draw the solo clarinet, orchestral oboe or tuba, you can rest assured that this is exactly what you will be getting. We can even provide complete ensembles of solo string choruses, from 16' through to III Cornet de Violes!

True 32' or Harmonic bass?

If there is one thing that understandably upsets organ advisors more than anything else, it is the addition of a 32' stop to a small organ. Full length 32' pipes or even half length pipes are both expensive to build and take up considerable amounts of space within the organ chamber. Therefore, they are more often than not omitted from the majority of church instruments.

One solution favoured by many pipe organ builders for average sized instruments is the inclusion of a 32' Acoustic Bass. This method takes, for example, the 16' Bourdon with a Quint in the bottom octave, producing acoustically the harmonics of a 32' pipe.

Appropriate Use of Tremulants

When properly adjusted, tremulants can be very effective indeed for occasional use. Generally they are divisional in nature, but it is certainly the case that certain stops within a division should not have tremulants applied to them. For example the Choir Tuba and the main Swell reed chorus. It is for this reason that our stop jamps or tab rails are designed such that the tremulants are located carefully to indicate which stops they apply to and which are Tremulant free. You can make your own mind up if you want a Great Tremulant or not!

The best in sampling technology is what Makin is about. For many years we have had an excellent library of Samples taken from the best pipe organs in the country from many different builders and many different sizes of buildings. Each year we sample more organs to add to our library to ensure that we have as broad a range of samples as possible. As you will have read in earlier editions of Makin News, our latest Westmorland Custom technology allows us to have one sample for every single note of every stop and rank of pipes. That, together with the large number of amplifiers and speakers we use, is why Makin instruments are simply the best in sampled technology. However, be assured that we are not sitting on our laurels ... the best will get better.

I have to ask myself why some companies who have been using sampled technology for many years have now gone back to the old mathematical methods of physical or wave form modelling with their associated intractable problems, i.e. using computer algorithms to generate pipe organ sounds. Are they really saying that they had got it wrong for many years and have sold their customers second-best instruments? Do they really think that technology from the past can be improved upon to such an extent that it is better than high-end sampling? I know where my money is. As you can imagine the chat rooms on the internet are very busy. It's a strange old world.

Sincerely,



Dr Keith A Harrington

Octave, Unison Off, Sub Octave Couplers

Swell Octave couplers are very common on pipe organs. Who can deny that one of the most magical effects is to play quietly on the swell strings with a soft 32' & 16' Pedal and the Swell Octave drawn? Indeed, careful use of the Sub Octave as well, giving you 16', 8' and 4' strings can be even more magical. Very few digital instruments include what are often seen as vital divisional couplers by the English organist. The choice of making these couplers 'read through' on interdivisional couplers or not is entirely yours also.

Stop Transfers

Stop transfers are often used on larger pipe organs where, for example, the Great reed chorus (16', 8', 4') are transferable to the choir. The transfer itself is usually done by selecting a Drawstop 'Great reeds on Choir' which in some instances is on the Great jamb, or occasionally it could be on the Choir jamb. Importantly when the stop is drawn, the reeds play only on the Choir and not on the Great.

Pistons

Pistons are small buttons that can be pressed by the organist to affect instant changes in stops; they are generally found between the manuals (thumb pistons) or above the pedal board (toe pistons). Pre-set pistons are generally reversible, meaning that they can be pressed to pull on a stop and pressed again to take that same stop off, and are generally used for couplers.

Divisional pistons are usually located under the manual to which they correspond and placed in line with middle "C". These pistons will only affect the manual with which they are under and can be used to alter the various combinations of the speaking stops to that manual. General pistons are usually located under the top manual under the bottom octave of keys. These pistons effect stop combinations for the entire organ.

Another type of piston is the stepper piston. These pistons have either a plus "+" or minus "-" on them and when pressed will step forwards or backwards through the general pistons. On custom instruments, there are 250 separate memories for both the divisional and general pistons.

Finally, it is also important to bear in mind the ratio of pistons to speaking stops. If we use extreme examples, with a two manual instrument of about 26 speaking stops, then 6 divisional pistons would be expected. Likewise, with a three manual instrument of about 50 speaking stops, 8 divisional pistons for each manual would be more than adequate.

Great Unenclosed or Enclosed?

The English organ generally has the Great manual unenclosed. Makin instruments generally follow this pattern. However, there are instances where the church has specifically asked for the Great to be enclosed within its own swell box. Our system is exceptionally flexible, and the choice is down to the customer. Indeed on our best selling Westmorland Jubilee instrument, designed in collaboration with Dr Simon Lindley, the decision



The Vermeer Mk 5 organ at Southport Holy Trinity. This is the church where Makin founder Mr John Pilling was organist for many years

was taken to enclose the Great and Pedal for the flexibility it gives to a home practice instrument.

Great & Pedal Combinations Coupled

Found on small and large organs alike, this simple device will mean that when you press a combination piston for the Great, the matching Pedal combination will also be selected (and vice-versa). So if you press Great piston 4, the matching Pedal piston 4 is also selected. Interestingly, this is a peculiarity to English organ building and is not found on foreign pipe or digital organs. It comes into its own of course for hymn playing, ensuring that you have matching manual and pedal combinations. Occasionally in English pipe organ building, you will also find the equivalent Swell & Pedal Combinations Coupled, which we can also provide.

Swell on General Toe Studs

A simple device often found on larger instruments, so that the functionality of a set of combination Toe Studs can be interchanged.

These are all standard features available from Makin, but features that you will not find on many other digital organs, which are either not built specifically with the English market in mind, or simply they don't have the computing power or technology available to include them. Don't settle for second best! Accessories and playing aids provided by Makin.



An impressive full jamb. Customers have the choice of which Drawstop solenoids to use, including both short and long-throw options



(L to R) Chris French, David Fetterman, Nicky Howarth, Dr Keith Harrington, Richard Goodall, Jo Swain, James Harker, Corbie Harrington, Steve Lanyon and Geoff Ashton. Robert Slater and Graham Slater were not present as they were away on an installation!

Westmorland Gigue Organ

The Westmorland Custom 'Gigue' was installed at Mixbury in early May 2008. As you will see this is a spectacular looking instrument which very much dominates one end of the showroom. The installation itself was a challenge with only millimetres to spare as the console and façade were brought in section-wise through the doors.

The Gigue organ itself has been specifically designed by James Harker to bring out the best in our instruments using the world beating Westmorland Custom technology including the latest 'Multisamples' where every single note of every single stop is represented by a separate sample from an original pipe. Flexibility is key to the specification with Octave, Sub Octave and Unison Off couplers for both swell and choir helping to create great versatility.

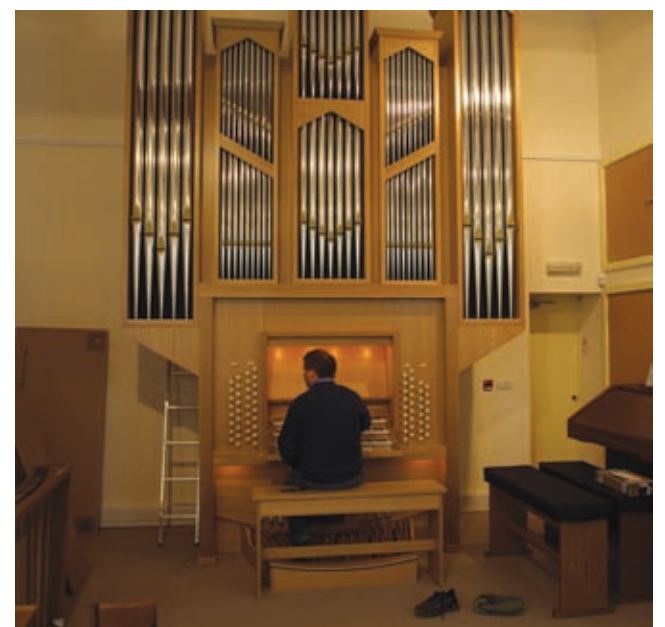
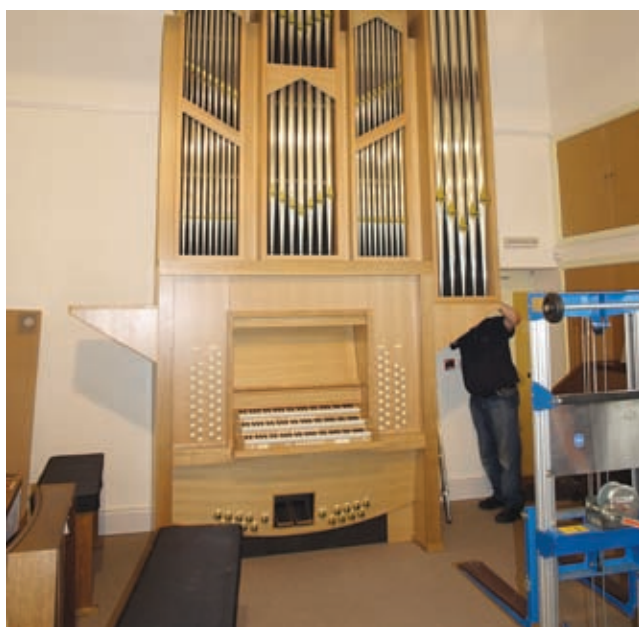
Not only in looks and in sound is this organ a winner, but remarkably given its size it is very comfortable to play with a wide range of playing aids with 8 combination pistons per division with 250 individual memories. The amplification system is comprehensive with 26 amplifiers powering the 53 stop behemoth with 2 stops per amplifier giving an incredible breadth of sound.

This has added a new dimension to the already popular Mixbury showroom with the ability to hold concerts on a good sized instrument. Indeed as described opposite, Professor Ian Tracey opened this instrument on 31st May 2008.

It's no wonder that our Mixbury showroom is so busy when customers can enjoy playing such an instrument.



An impressive sight. Once built the Gigue dominates the Mixbury Showroom



Building the Gigue was no small task

Pedal		Choir (enclosed)	
Contra Violone	32'	Stopped Diapason	8'
Open Diapason	16'	Dulciana	8'
Violone	16'	Principal	4'
Bourdon	16'	Chimney Flute	4'
Leiblich Bourdon (Swell)	16'	Nazard	2 2/3'
Principal	8'	Recorder	2'
Flute	8'	Tierce	1 3/5'
Fifteenth	4'	Larigot	1 1/3'
Mixture (19.22.26)	III	Mixture (22.26.29)	III
Contra Trombone	32'	Clarinet	8'
Trombone	16'	Orchestral Oboe	8'
Fagotto (Swell)	16'	<i>Tremulant</i>	
Trumpet	8'	Tuba Mirabilis	8'
Clarion	4'	Royal Trumpet	8'
<i>Swell to Pedal</i>		<i>Octave</i>	
<i>Great to Pedal</i>		<i>Unison Off</i>	
<i>Choir to Pedal</i>		<i>Sub Octave</i>	
<i>Great & Pedal Combinations Coupled</i>		<i>Swell to Choir</i>	
<i>Generals on Swell Toe Pistons</i>			

Great		Swell (enclosed)	
Double Open Diapason	16'	Lieblich Bourdon	16'
Open Diapason No. 1	8'	Open Diapason	8'
Open Diapason No. 2	8'	Lieblich Gedackt	8'
Claribel Flute	8'	Echo Gamba	8'
Principal	4'	Voix Celeste	8'
Flute	4'	Principal	4'
Twelfth	2 2/3'	Lieblich Flute	4'
Fifteenth	2'	Fifteenth	2'
Mixture (19.22.26)	III	Mixture (12.19.22)	III
Sharp Mixture (26.29)	II	Oboe	8'
Double Trumpet	16'	Tremulant	
Posaune	8'	Contra Fagotto	16'
Clarion	4'	Comopean	8'
<i>Swell to Great</i>		Clarion	4'
<i>Choir to Great</i>		<i>Octave</i>	
		<i>Unison Off</i>	
		<i>Sub Octave</i>	

The Sounds of The Summer: A Fantastic Opening Recital on Makin 'Gigue' at Mixbury by Professor Ian Tracey

Professor Ian Tracey gave an amazing opening recital on the newly installed 'Gigue' organ at Mixbury. To packed audiences in the morning and afternoon of Saturday 30th June 2008, Ian Tracey gave a beautifully crafted recital displaying the tonal colours of the Gigue organ.

Part - The First

Overture to the Occasional Oratorio	G F Handel/Best
Fugue a la Gigue	Dietrik Buxtehude
Chaconne in D	J S Bach/Goss-Custard
Four Sketches for Pedal Piano	Robert Schumann
Scherzo in G	Marco Enrico Bossi

Part - The Second

Suite Gothique (Choral, Menuetto, Priere, Toccata)	Leon Boellmann
Elegy	George Thalben-Ball
Tuba Tune	Norman Cocker
Danses: Fee Draguee, Arab, Mirlitons (Nutcracker)	P I Tchiakovsky/Tracey
Lied to the Flowers & Lied to the Sun	Flor Peeters

Makin customers and prospective customers thoroughly enjoyed the free recital and Hog Roast hosted by the company in the idyllic countryside setting at Mixbury. The Gigue organ itself is an impressive sight with an exciting pipe façade covering the twenty six independent speakers. The specification is opposite.

The 2009 event will be held on 30th May in Mixbury. Please register for a ticket as soon as you can since, if our experiences of the 2008 event are anything to go by, they will soon be in short supply.

Johannus Concerts at Ede

Johannus also holds a series of summer concerts at Ede, and if you are ever in the area they are well worth attending. Usually lasting up to two hours, you have a wonderful opportunity to hear some of the best continental organists playing on the Cavaillé-Coll style organ. Pictured here is the splendid concert hall which was full to overflowing with over 350 guests when the Harm Hoeve concert started half an hour later.



A summer concert at the Johannus headquarters in Ede, Holland

Customers Testimonials

From Alan Cross, Northwich Castle Methodist & URC Church

"I have had a Makin organ at home for over 10 years and am well pleased with it.

When we sold our previous United Reformed Church building and moved to share premises with the local Methodist Church I had to say a farewell to a vintage Nicholson organ, fortunately taken back by Nicholson's. When funding became available for a new organ I had no hesitation in recommending Makin again.

When we came over to Shaw and you listened to our needs and our budget and pointed us in the direction of the Westmorland Village organ, designed in consultation with Professor Ian Tracey. We liked what we heard and readily persuaded the governing bodies of the two churches to accept the offer of the loan of a demonstration model over the Christmas period. Although the speakers were only laid flat in a temporary position the sound was so good that there was no difficulty in persuading the churches to forward to a full purchase.

At a social evening last week we concluded by holding a short dedication service for the organ and then the Hallelujah Chorus rang out (in Baroque mode). I then demonstrated the range of stops and the English, French and Baroque sounds and everyone seemed to enjoy the evening.

This excellent small organ possesses some good solo stops, clarinet, oboe and trumpet as well as boasting a 16' trombone on the pedals and mixtures on both manuals whose composition changes with the change of mode. We are well pleased with the result.

My only problem has been trying to persuade reluctant organists, who have no experience of a full compass two manual organ to use it for the service. I was delighted to learn last week that one lady, who the church had thought would not want to use it had played and found some acceptable music for the service. The congregation were well pleased with the music she provided that morning and I now hope she can move on and start using the manual to bass button."

From Ian Curror FRCO(CHM), GRSM, ARCM, LRAM, All Saints Chapel, The Margaret Thatcher Infirmary, The Royal Hospital Chelsea

"The brief for the organ in the newly-built All Saints Chapel was specific on a number of points. The instrument was required to accompany robust hymn singing, accompany a sextet of professional singers in a wide range of church music, and be suitable for teaching organ students. The console was to be as near 'normal' as possible, with all the controls for peripheral facilities (transposer, midi functions, volume etc) located to one side, away from the player's forward view, and the loudspeakers located within the console cabinet. Tonally, the organ was based on a romantic English model, many of the samples being taken from distinguished pipe organs. Makin met these stringent demands with a high degree of professionalism and attention to detail and I am grateful for the firm's good-humoured patience with me. The firm even met my (I think unique) request for a sequencer repeater, located on top of the choir manual cheek, for the convenience of a page turner/registrant. Our new chapel has a truly custom-built instrument it can be proud of and which will enhance its liturgical music making for many years to come."

From Mr Round, Oundle

"I am writing to say how pleased I am with the Westmorland Classic organ which I have recently purchased from Makin. When looking for a replacement for my old instrument, my main concerns were to find an organ which sounded as much like a pipe organ as possible and which felt like a pipe organ to play. Before I settled on the Westmorland Classic, I played a large number of other organs from other manufacturers and there was no doubt in my mind that Makin was best on both counts. My main problem was trying to decide which Makin instrument to buy! During my dealings with Makin I was very impressed with the professional nature of the company. Richard Goodall patiently and courteously answered my many questions, the installation team came exactly when they were supposed to and quickly got the organ set up and working in its new home, and I have found the after-sales service to be very efficient and helpful. I have no hesitation in recommending Makin to anyone."

From Graeme Tarbet, Dundee Muirhead Church

"As organist of Muirhead Parish Church Dundee I am delighted to advise you that the office-bearers of the church decided to buy a new organ resulting in the Johannus Opus 27 being installed there last October. As you can imagine I am enjoying playing and exploring the organ and the congregation have noticed a difference too. Quite a number of local organists have been visiting the church and have become quite envious of us.

As you will know the buying of a new organ is a major undertaking for a church and a very anxious time too. In the course of exploring your website we were greatly encouraged by the various testimonials from churches who had been guided through this anxious time by the consultants of Makin Organs which encouraged us to proceed.

From the first meeting with your consultants and throughout our contact with them (including our visit to the Open day at Kirkcaldy in May) we were never subjected to pressure salesmanship and very confusing technical jargon (as we had feared) rather we felt guided by very professional and truly friendly people whose sole aim was to meet the needs of our church and provide a high quality organ at the price we were able to afford. This good relationship was enhanced when the consultants visited the church and subsequent contact until and including the day of installation of the organ which I witnessed and was indeed a sight to behold watching the efficiency of your staff. We are extremely grateful to and glad to have experienced the expertise of their company in a very important part of the history of the church. We will have no hesitation in recommending your company to any church seeking to replace their organ."

From Dr Roberts, Hunts Cross

"The whole process of purchasing my Johannus Opus 17 has been an enjoyable experience, from the initial showroom visit, when we were made to feel most welcome and at home, to the actual installation.

The installation, from my point of view, could not have gone more smoothly. As you can imagine, excitement had been building in anticipation of the day, and you all arrived spot on schedule, complete with smiles despite the rotten weather!

Steve, John and Keith made the job appear a labour of love and I cannot thank you enough. Now the serious work starts of learning to get the most from my instrument, a task I am looking forward to with relish."

From Canon Mitcheson, St Wilfrid's Church, Longridge, Preston

"Thank you for your reliable attention and for the efficiency of your transaction. It is music to my ears!"

From Mr Hind, St James Methodist Church, Rainhill, Prescott

"On behalf of everyone at St James Church I would like to say a big thank you for the new Makin Organ you installed for us recently.

Throughout the process of purchasing the organ we received valuable advice, initially from James over the phone and on his visit to our premises. Then later at our visit to your showroom at Shaw, where we received the utmost courtesy and help from everybody we met.

Once we had placed the order we were kept well informed regarding delivery and installation. We were also helped by you supplying us with the cable to allow us to run it under the floor prior to having new flooring fitted.

Your installation team, led by Steve did a professional job fitting the organ and speakers to our requirements, with little fuss or disturbance. All coming to fruition the following day when James did the voicing and then gave our organist valuable advice, after which his confidence grew.

Immediately prior to our reopening Service our architect Mr Ralph Dransfield gave a recital, showing us what a vast range of music and sounds can be achieved on our new Makin organ.

A wonderful testimony to you and all your staff for all you have done for us during this project."

From Patrick Black,

Sacred Heart Church, Barrow in Furness

"I must say it has been a pleasure to deal with your firm over the years, and the organ you installed in Sacred Heart Church has done, and is still doing sterling service. We have received many compliments on it over the years."

From Dr Harrison, Middlesborough

"It has been a delight to deal with such a highly professional company as Makin.

The entire process from my initial enquiry to the delivery of my organ has been a real pleasure. Such efficiency and care is a rare attribute in today's society. Thank you all so much."

From Dr Morgan, Northampton

"I'm writing to say I'm very pleased indeed with the Johannus Opus 15 organ delivered to my home a few weeks ago. In its baroque intonation the sound is impressively similar to a classical 18th century pipe organ, and with a convincing tracker-type key touch.

The intonation can also be changed to romantic or symphonic, and a very wide range of organ music can be played faithfully. The presence of three different temperaments is very useful to a classical enthusiast such as myself. The technology has advanced enormously compared with my older Opus 230, bought about 25 years ago.

When purchasing, the Makin staff were very helpful, including plenty of time to try out the many organs in the Mixbury showroom, and patient with my many requests for changes to the basic model. I thought the Makin staff were also very knowledgeable generally about the complex topic of pipe organs, and this is also most helpful when considering what electronic instrument to have. Many thanks for all your help."

From Mrs Jennifer Peabody,

Sulhamstead Abbots, St Mary

"I am pleased to report that the organ installation has exceeded our expectations."

From Mike Lomas, St Hugh of Lincoln, Stretford

"In the first place may I apologise for not writing earlier, I've been far too busy playing the marvellous instrument that has been installed at church!!

The whole experience from choosing the specification to installation was truly mind blowing. On the day of installation, Steve and Dave were professional yet ultra aware of our requirements. They were superb and a credit to your company.

The response from the congregation has been fantastic and I am regularly asked where I have hidden the pipes!! The singing has increased exponentially with the quality of sound from the organ.

Once again, many thanks for the truly exceptional quality and service, and please feel free to point future customers my way for endorsement."

From Ian Jones, Edge Hill University

"I write to thank you and your team for providing a Makin Organ at the University's inaugural graduation ceremonies. The event was a great success and your services were excellent; in particular the two gentlemen who delivered and set up the equipment were most accommodating, supportive and professional as we experimented with the best positioning of the Organ and speakers."

From Mr George, Brierley Hill Methodist Church

"We are entirely satisfied with the way you have dealt with us in this matter. Richard Goodall has been most helpful both at our original visit to Mixbury and thereafter."

From Revd David Souter, Kinnoull Parish Church, Perth

"On behalf of Kinnoull Parish Church I want to place on record our most sincere thanks for the way in which our new Makin organ has been provided. The process has been a pleasure at every stage. Even the interim instrument which was supplied to cover the months when the work of removing the old pipe organ was going ahead soon became known affectionately as the "Baby Makin" and it was of more than adequate quality to lead worship.

However the final installation has been met with the highest of praise not only from the congregation but has also been acclaimed across the wider organ fraternity within Scotland. Your patience and your personal interest in helping us to achieve such an excellent result has been much appreciated. The voicing and final tweaking to ensure that we were entirely satisfied was what made all the difference.

We at no point felt that we were simply making a purchase but rather that together with your staff we were part of a creative process to ensure that we should have an organ appropriate to the needs of our particular church. The result is an extremely fine instrument of which we all can feel justifiably proud."

From Janice Hartley, Greenmount URC

"Thank you for giving me the best Christmas present of my life. It has been amazing and people have come to hear it from the village and have been most impressed. A joyous Christmas and happy New Year to all at Makin's."

'Autumn Shades' at Shaw

Saturday 4th October was a very special day for Makin Organs when Professor Ian Tracey, organist Titulaire at Liverpool Cathedral, formally opened our new Westmorland Custom 4 manual organ in the showroom by playing a recital on it and the Westmorland Village organ which he helped design. Indeed to be accurate he played two recitals to packed showrooms in the morning and afternoon sessions.

The recital itself felt very 'Liverpool' in style in that there was definitely something for everybody with lollipops such as Ian's own arrangements of three movements to the Nutcracker suite being on the same program as a Handel transcription and Georgi Muschell's famous Toccata played at a blistering pace. The music was interspersed with interesting and at times hilarious commentary by Ian.

For me, one of the highlights was Ian playing Thalben-Ball's Elegy on the Village instrument after talking through his experiences of being with GTB when he played it at the Temple Church in London and at the 50th anniversary celebrations at Liverpool. What a gem the Village organ was for this piece.

Midway through the day food and drinks were provided for both the morning and afternoon audiences which, although a potential logistical nightmare, worked very well. For those who do not know him personally, Ian is exceedingly approachable and he spent considerable time talking to customers and signing his new DVD which is one not to miss. He always brings his personal warmth to the music he plays which, alongside his talent, is why he fills recitals.

I am pleased to say that Ian is already booked for a return visit on Saturday 10th October 2009. Admission will again be free, but by ticket only. Based upon this year's attendance, please do reserve your tickets as soon as possible.



Professor Ian Tracey midway through his first piece in Shaw



Keith and Ian at the end of a fabulous day

Thank you so much for inviting me to this. I thoroughly enjoyed the experience and Makin hospitality was excellent as usual, helping to make the day very special. Please pass on my thanks to members of your staff; they looked after us all splendidly in true Makin style.

Prior to this event I had only heard Ian Tracey on various recordings and had never met him. What a delightful person he is; so down to earth and approachable, despite his exalted position and virtuosity. He brings a breath of fresh air to such recitals. I particularly like the style and humour of his introductions – the way he delivers little anecdotes about composers, arrangers and other organists.

Once again, thank you for everything, for hosting such events, for valuing me as a customer, and most of all for bringing so much joy back to my life through the wonderful instrument you have made available to me.

Trevor Poxon, Walsall

Westmorland Custom 4 Manual Draw (4-56) Specification

Pedal		Choir (enclosed)	
Contra Violone	32'	Stopped Diapason	8'
Open Diapason	16'	Dulciana	8'
Violone	16'	Principia	4'
Bourdon	16'	Chimney Flute	4'
Principal	8'	Nazard	2 2/3'
Flute	8'	Flautina	2'
Fifteenth	4'	Tierce	1 3/5'
Mixture (19.22.26.29)	IV	Larigot	1 1/3'
Contra Trombone	32'	Mixture (22.26.29)	III
Trombone	16'	Cremona	8'
Bassoon	16'	Tremulant	
Trumpet	8'	Solo to Choir	
Shawm	4'	Swell to Choir	
Solo to Pedal			
Swell to Pedal			
Great to Pedal			
Choir to Pedal			
Great & Pedal Combinations Coupled			
Generals on Swell Toe Studs			

Great		Swell (enclosed)	
Double Open Diapason	16'	Bourdon	16'
Open Diapason I	8'	Open Diapason	8'
Open Diapason II	8'	Stopped Diapason	8'
Stopped Diapason	8'	Salcional	8'
Principal	4'	Vox Angelica	8'
Suabe Flute	4'	Principal	4'
Twelfth	2 2/3'	Nason Flute	4'
Fifteenth	2'	Fifteenth	2'
Full Mixture (15.19.22.26)	IV	Mixture (19.22.26)	III
Sharp Mixture (26.29.33)	III	Oboe	8'
Reeds on Choir		Tremulant	
Double Trumpet	16'	Contra Fagotto	16'
Trumpet	8'	Cornoepen	8'
Clarion	4'	Clarion	4'
Solo to Great		Octave	
Swell to Great		Sub Octave	
Choir to Great		Solo to Swell	



Solo (enclosed)	
Hohl Flute	8'
Viola da Gamba	8'
Flauto Traverso	4'
Piccolo	2'
Como di Bassetto	16'
Hautboy	8'
Tremulant	
Tuba	8'
Octave	
Unison Off	
Sub Octave	

My husband and I attended the wonderful event at your Shaw Headquarters yesterday and I just wanted to say thank you very much indeed for a most interesting and pleasant morning. We were very courteously and warmly welcomed by your staff who could not have done more to ensure our comfort. It was amazing to see so many beautiful organs in the showroom.

Then, we were absolutely thrilled by the playing of Professor Ian Tracey. It was a great privilege to hear him play such a wide variety of pieces. His introductions to each one were so delightful and humorous and it was good at the end of the event to thank him personally as we left. We had a super time and we are most grateful to you for making it possible.

Elaine Clare, Skipton



Our new Westmorland Custom four manual draw instrument in Shaw



The left jamb of our four manual instrument in Shaw

I would like to thank you most sincerely for the hospitality and Autumn Shades concert. The performance, as ever, excellent and I really enjoyed the new organ – the sound of which was exceptionally good and I can imagine being even more enhanced in a larger acoustic environment.

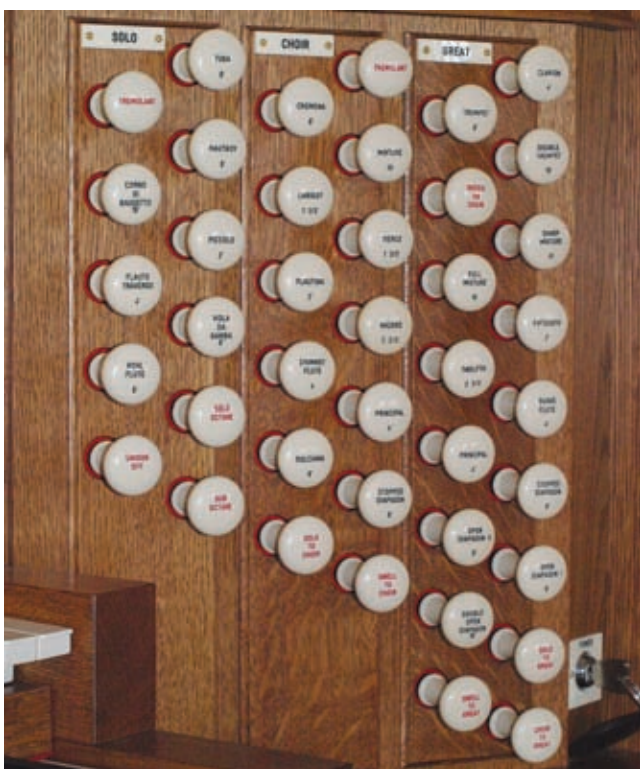
David Bird, Upton by Chester

Thank you for such a lovely day out! You organised a really good time for us. We hope the afternoon went as well as the morning.

Andy & Brian Ives

On behalf of Alan Willetts and myself from Brierley Hill Methodist Church I wish to thank you for a splendid day on the 4th October and to say how much we enjoyed your hospitality and the opportunity to meet members of your staff. We are pleased with the organ purchased and look forward to our continuing association with Makin Organs. It was a special pleasure to hear Ian Tracey.

Bernard George



The right jamb of our four manual instrument in Shaw

Makin Professional Services

You don't simply buy an organ with Makin you invest in one and get true benefits of service. Here are a couple of examples.

Organ Voicing

Included in the purchase of all new Makin organs, is their voicing to very high standard, on a note by note, stop by stop basis. There is no doubt that our voicing skills and technology are now better than they have ever been. Certainly it would appear that our voicing software is far more flexible than that used by many of our competitors.

Makin is now offering voicing visits to organs that were installed a number of years ago. Is this worth the time and money? Customers have given a resounding 'Yes' in response to this question.

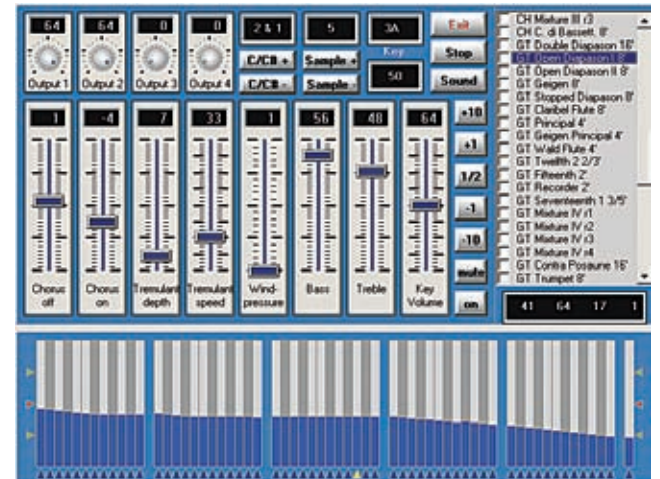
Following re-voicing, customers feel like they have a new instrument, thanks not only to the intimate knowledge Makin has with our new updated voicing software, but more importantly with the years of experience our staff have with pipe organ tuning, voicing and regulation. With Makin Organs you get the best in voicing from a professional, rather than something that is merely adequate. This helps ensure that you get the best out of your instrument.

Midi Recording

Many churches have found problems in finding an organist for mid-week services, and indeed some churches can find it difficult to find an organist at all. Midi Sequencers (digital recording units) often help solve this problem where an organist can record a number of pieces for playback at a later date. Indeed, organists often record music for use whilst they are away on holiday.

Makin Organs can now provide the services of one of their professional organists who will visit your church and record pieces of your choice for later use. Having a top-rate organist, particularly one with an intimate knowledge of the instrument, to record pieces is something that a number of customers have found very useful. Indeed, with the advent of the new Midi Sequencer Plus from Johannus, it is perfectly feasible to record the entire hymn book onto a single SD card for you.

The regular organist can download the files from SD card to a standard PC both to back them up and to create their own library. Selections can then easily be made for individual services to make it even simpler to use on the day by the operator.



A screenshot of our state of the art voicing software



Makin vans on mass at a Church

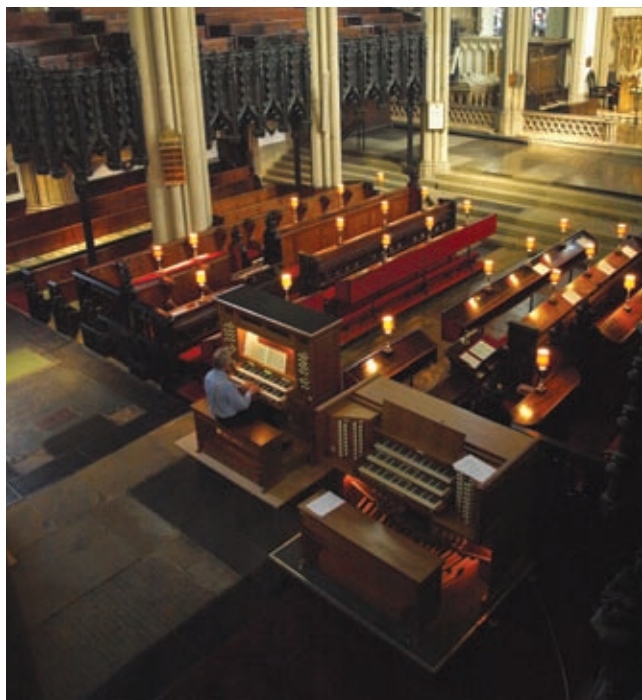


The Johannus Midi sequencer. This uses SD cards rather than outdated floppy disks



It All Starts from A Report

When we visit a church to look into the replacement of an old organ, whether it be pipe or early electronic, the first thing we do is to get as much detail recorded as possible in terms of the building, acoustics, aesthetics, customer needs, desires etc. and then pull all this together into a Survey report. Indeed at this early stage in the process, we are likely to walk around the whole building and record on our Installation Survey documents all kinds of detail that will be required later on including access and toilet facilities.



David Houlder prepares for the 2008 Battle of the Organs at Leeds Parish Church

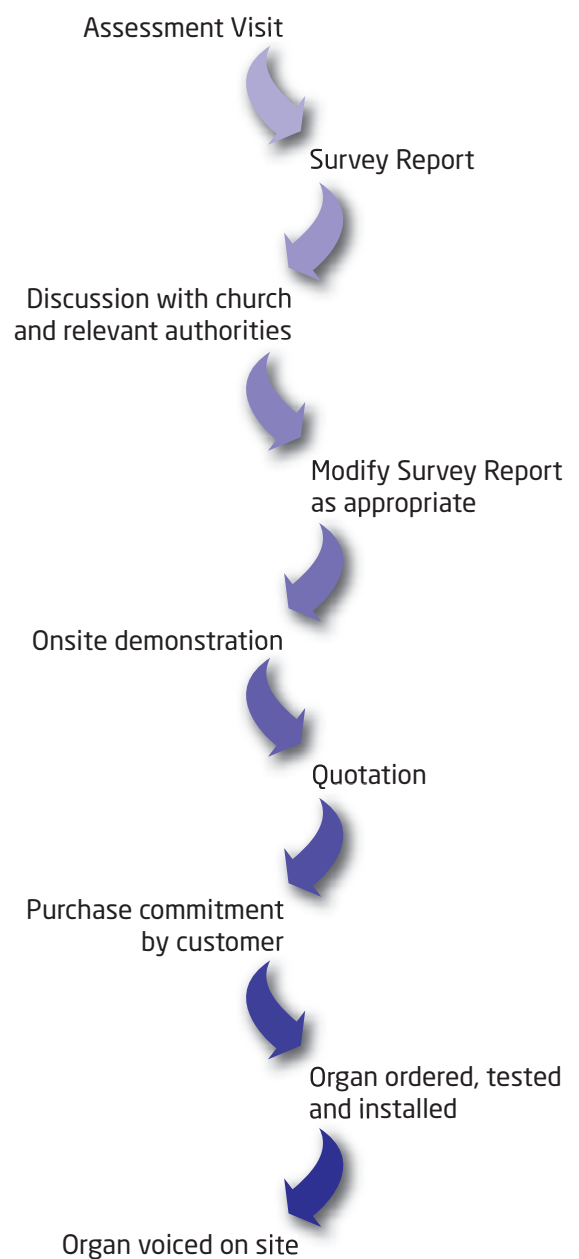
Typically the church will see the first version of this report alongside appropriate suggestions for an instrument, including a sample specification within a couple of weeks of the installation visit. There are normally a variety of options to be decided upon such as drawstop or tab control, console colour etc. with an appropriate range of prices. Such reports are tailored to each individual customer and provide a strong basis for additional discussion. These reports are written to be of use and readily understandable by many groups of people from organists, to clergy, PCC members and church authorities.

After initial discussions, these reports can be modified as appropriate should any additional detail become relevant or indeed irrelevant. For example, if a decision is made concerning the likely placement of speakers and enclosures with other options being ruled out then the report can be amended to show this.

Following on from the report, once the detail has been honed down, an accurate quotation can then be prepared which details exactly the options chosen by the customer. You'll find no hidden costs or fees here.

Frequently in this process, an on site demonstration will be provided by Makin. Great care is taken to make sure that the organ delivered will meet as many of the customers desires for a permanent installation as possible. For example, there is little point in demonstrating a three manual drawstop instrument when the customer wants a two manual tab instrument or indeed vice versa. Typically staff from Makin will provide an evening talk to interested parties during which the organ is demonstrated and then we will simply leave the instrument with you for a period of weeks. With a stock of around ten demonstration instruments at any one time you can be sure that we will find something appropriate.

Much effort from ourselves and by the church go into getting things right at an early stage so that we avoid pitfalls at a later stage. As you will read from our customer testimonials, it is this professional approach from Makin which is enjoyed by our customers who will then have an instrument to savour for many years to come.



Cornwall Road Show

In November 2008 we held an excellent road show at St Elwyn's Church in Hayle, Cornwall. Front and centre was the churches' Westmorland three manual organ which organist David Woodger enjoyed demonstrating to fifty or so organists from the local area. In addition, we brought along two examples of home practice instruments, which can also be installed in a small church, an Opus 7 and a Westmorland Village. Since we were somewhat limited for space and shared the same acoustic with the main instrument, these needed to be played on headphones, but both were almost continually played for six hours.

The day was made all the more interesting as people viewed aspects of the installation work which was ongoing, including, to many people's delight, the initial voicing of the instrument. A good day was had by all with many being there for most of the six hours.



The beautiful St Elwyn's Church in Hayle, Cornwall

With no showrooms for digital organs of any make in the local area, the organists present simply did not realise what is possible with the high quality digital instruments of today. Makin will be back again at Hayle on Saturday 22nd November 2009 from 10:00 until 16:00. If you are in the area, please do come along and have a day to remember.

Without help from our customers these events are difficult to organise, and in respect of this I would like to thank Mrs June Allen, the Churchwarden at St Elwyn's, for all her organisational help.



A few guests try out the Westmorland Village Organ in Hayle

'Sounds of Marsden'

by James Harker

James Harker has recently recorded his first solo CD at Marsden Parish Church where he is organist. The organ itself is the work of Binns with the following specification:-

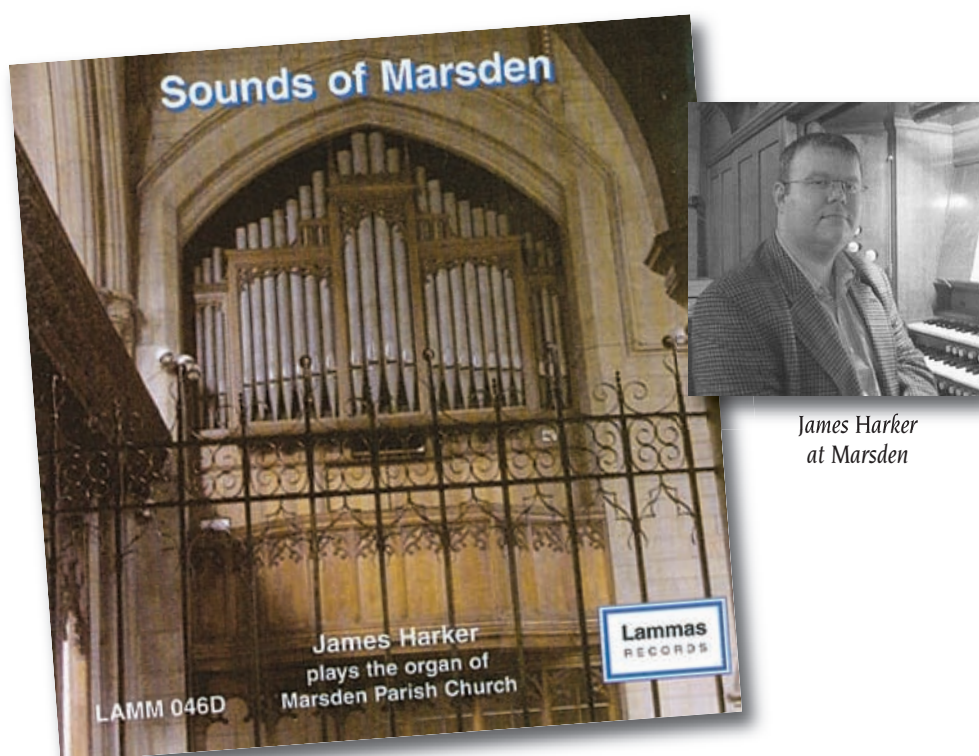
Pedal		Choir (enclosed)	
Sub Bass	32'	Gamba	8'
Open Diapason	16'	Dulciana	8'
Bourdon	16'	Vox Angelica	8'
Octave Bass	8'	Lieblich Gedact	8'
Bass Flute	8'	Flauto Traverso	4'
Trombone	16'	Clarinet	8'
Trumpet	8'	Tremulant	
<i>Swell to Pedal</i>		<i>Swell to Choir</i>	
<i>Great to Pedal</i>			
<i>Choir to Pedal</i>			
<i>Great & Pedal Combs Coupled</i>			
Great		Swell (enclosed)	
Bourdon	16'	Bourdon	16'
Large Open Diapason	8'	Geigen Principal	8'
Small Open Diapason	8'	Rohr Flute	8'
Gedact	8'	Viol d'Orchestre	8'
Principal	4'	Voix Celestes	8'
Flute Harmonic	4'	Octave	4'
Twelfth	2 2/3'	Fifteenth	2'
Fifteenth	2'	Mixture	III
Trumpet	8'	Cornopean	8'
<i>Swell to Great</i>		Oboe	8'
<i>Choir to Great</i>		Tremulant	
		Octave	
		Sub Octave	

The Lammas Records CD has been produced by the church to raise funds and is available at £15.00 including P & P directly from Makin Organs. The programme is:-

Thema met Variaties	H Andriessen
Sicilienne	M T von Paradis (arr. R Gower)
Prelude	C S Lang
Elegy	A Viner
Postlude from "Canticle of the Rose"	A Ridout
Gymnopedie	E Satie (arr. A Ridout)
Apparition de l'Eglise	O Messiaen
Rorate Caeli	J Demessieux
Attende Domine	J Demessieux
Berceuse	L Vierne
Choral No 3 in A minor	C Franck

The CD comes with a booklet containing copious programme notes together with photographs of the organ console and, as James has said himself, a dreadful photograph of the artist.

A 'Battle of the Organs' at Marsden which sees the resident Binns Organ taking on a Westmorland Custom Organ is taking place on Wednesday 16th September 2009. Do come along.



James Harker at Marsden

Sound Bites

Testimonials Online

Our most recent customer testimonials can always be found online on our website www.makinorgans.co.uk where you can download a PDF version of them. However, there is nothing like seeing the actual letters and reading them yourself. Our organ consultants will always have these to hand, and you can read them at your leisure in our showrooms at Shaw and Mixbury. Come along and treat yourself to a lovely day out.

Amplifiers to Stops Ratio

As you will have heard many times from Makin Organs getting the ratio of stops to amplifiers is critical to producing a good sounding digital organ whatever the make. Take great care; this is the important ratio and count your amplifiers rather than speakers since one or two of the cheap and cheerful makes of instrument count speakers rather than amplifiers which of course may be a totally different ratio since there may be many speakers, or drivers, attached to each amplifier.

As an example Makin recently produced a 3-35 instrument with a 13 channel amplifier system (this corresponds to a ratio of 1:2.7). We installed 13 speaker cabinets which between them had a total of 37 speaker drivers which made for a simply excellent sound.

A competitor's cheap and cheerful instrument may well have 35 stops and 13 speakers, but they are really counting drivers rather than speaker cabinets or amplifiers and the organ actually was a 5 channel amplifier system which would make the ratio 1:7.0 which of course is very inferior in comparison with the 1:2.7 instrument from Makin. Take care in what you read!

Stereo Organs

There are digital organs out there that are essentially stereo with Hi-Fi speakers attached rather than bespoke organ speakers. Maybe I am missing the point, but what is the use? Since when has a pipe organ ever been stereo?

Getting the most out of your Makin and Johannus Organ

We are putting together plans for a one day course at both Shaw and Mixbury aimed at reluctant and amateur organists who want to get the most out of their church instruments. If you would be interested in attending such a course, or know somebody who would be interested, please do contact us so we can fully assess the level of interest.

Organ Check-ups

Makin offers a range of packages for the support of organs which are no longer covered by guarantee including a full annual service by one of our team of dedicated engineers. Please call us up to discuss which option would be most appropriate for you.

Mice!

With the hard winter, we have had a considerable number of organs requiring significant rewiring due to mice infestation which of course is not covered by our standard guarantee. If you ever come across mouse droppings, please do set down some humane traps for mice and other vermin. At Makin we are experimenting with putting in some ultrasonic mice deterrents in organs which have no effect on hearing aids and animals such as dogs.

Hires

For many years Makin has provided instruments for simple weekend events through to long term hires for Cathedrals and other prestigious churches throughout the country. For example, we currently have hire organs at Bristol, St Mary Redcliffe and at Cirencester Parish Church. For additional information, please visit our website or simply call the office to discuss details. It is strongly recommended that you give as much notice as possible since our installation teams are generally booked up at least eight weeks in advance of time and indeed dates are already being confirmed for 2010 with a number of repeat annual contracts.

SOME RECENT JOHANNUS INSTALLATIONS

Cannock, Mrs Miles	Opus 17
Chasetown Methodist	Opus 17
Darlington Crematoria	Opus 07
Disley, Methodist Church	Opus 17
Dundee, Muirhead Parish Church	Opus 27
Dukinfield, Dr Anderson	Opus 37
Dunster, St George	Opus 17
Great Yarmouth, Dr Michael Pretty	Opus 27
Hunts Cross, Mr Roberts	Opus 17
Isle of Man, Ms Barry	Opus 07
Liverpool, Sisters of Notre Dame	Opus 07
Llanbadaran Fawr Church	Opus 07
London, Lee, Church of the Good Shepherd	Opus 27
Meopham, St Paul's Church	Sweelinck 17
Middlesborough, Grove Hill Methodist	Opus 17
North Shields, Miss Berry	Opus 07
Northampton, Dr Morgan	Opus 15
Northampton, Mr Woodward	Sweelinck 25
Northwood, Mr Velauthan	Sweelinck 37
Tyldesley Methodist Church	Opus 17
Warminster School	Opus 27
Welwyn Garden City, Our Lady	Opus 17
York, Upper Poppleton	Opus 17

Installations continued on back page.

SOME RECENT MAKIN INSTALLATIONS

Alnwick, St James URC
 Anglesey, Mr Hutchins
 Bangor Crematoria
 Bawdeswell, All Saints
 Blackpool, Mr Holt
 Bodicote, St John
 Bridge of Allan Parish Church
 Brierley Hill, Methodist
 Buckingham, Mr Headon
 Burnley, Worsthorpe, St John
 Bury, Greenmount URC
 Chelsea, Royal Hospital
 Chesterfield, Old Tupton Methodist
 Colwyn Bay, Capel Y Rhos
 Coventry, St James Styvechale
 Cupar, St John
 Darfield, All Saints
 Devizes, St John the Baptist
 Devizes, St John the Baptist
 Firle, Mr Gillet
 Goostrey, St Luke
 Great Bourton, All Saints
 Hayle, St Elwyn
 Hazel Grove, St Peters RC
 Holywell, St Peters
 Horam, Mr Catt
 Ingleby Barwick, St Francis
 Kirkcaldy, Linktown Church
 Kneller Hall, Army School of Music
 Leicester Christ Church
 Leytonstone, St John
 Linlithgow, St Ninian
 London, Mr Berry
 London, Mr Harris
 Longridge, St Wilfrid
 Lower Crumpsall, St Thomas
 Ludlow, Mr Francis
 Lytham, Mr Meredith
 Middlesborough, Mr Harrison
 Northwich, Castle Methodist Church
 Perth, Kinnoull Parish Church
 Perth, Mr David McCleary
 Peterborough, Mr Round
 Prescot, Rainhill Methodist
 Rotherfield, Mrs Bagshawe
 St Andrews, Hope Park
 Stockport, St Matthew Edgeley
 Stockton, St Peter
 Stretford, St Hugh
 Thetford, St Mary
 Thornton Cleveleys, Mr Noble
 Thornton Cleveleys, St John
 Warminster Garrison
 Whitchurch, Mr Bebbington
 Whitley Bay, St Peter

WMC 2 manual
 WMC 3 manual
 WM Jubilee II
 WMC 3 manual
 WM Sapphire
 WMC 2 manual
 WMC 3 manual
 WM Jubilee II
 WM Sapphire
 WMC 3 manual
 WM Village
 WMC 3 manual
 WM Village
 WM Jubilee II
 WM Jubilee II
 WMC 3 manual
 WMC 3 manual
 WMC 3 manual
 WM Classic I
 WMC 3 manual
 WM 27T
 WM 3 manual
 WM Jubilee II
 WM Sapphire
 WM Sapphire
 WMC 2 manual
 WM Jubilee II
 WMC 3 manual
 WM 41T
 WMC 3 manual
 WMC 2 manual
 WM Village
 WM Sapphire
 WMC 2 manual
 WMC 2 manual
 WM Sapphire
 MT 338
 WM Village
 WMC 3 manual
 WMC 3 manual
 WM Classic II
 WMC 3 manual
 WM Jubilee II
 WMC 3 manual
 WMC 3 manual
 WMC 3 manual
 WM Village
 WM Sapphire
 WM Sapphire
 WM Jubilee II
 Majestic 227
 WMC 2 manual

Events

Here are some events in the next few months which may be of interest to you. For more information, please do not hesitate to contact Makin Organs. Please do visit our web site www.makinorgans.co.uk where the most up to date list of events is available online.

Saturday 2nd May 2009

Makin Mixbury Open Day, 10:00 - 16:00

Saturday May 9th 2009

Recital by Professor Ian Tracey on Wednesday at Hungate (Methodist and United Reformed) Church in Beccles, Suffolk. 19:30

Friday 15th May 2009

Professor Ian Tracey opens the new Makin organ at Goostrey, St Luke. 19:30

Thursday 28th May 2009

Carlo Curley plays the Makin organ at Syston Methodist Church, 19:30

Saturday 30th May 2009

Sounds of the Summer 2009, with Professor Ian Tracey, 10:00 - 16:00

Makin Mixbury: Details to follow

Saturday 6th June 2009

Makin Shaw Open Day, 10:00 - 16:00

Wednesday 10th June 2009

Leeds Parish Church, 19:30, Free Admission - Retiring Collection in aid of Leeds Parish Church Choral Foundation Appeal

5th Annual 'Battle of the Organs' with Professor Ian Tracey, Dr Simon Lindley, David Houlder and others. Hear the Parish Church organ play with three Makin instruments. Based upon last three year's events, this is one not to miss!

Saturday 13th June 2009

Makin Road Show, Kinnoull Parish Church, Perth, Scotland, 10:00 - 16:00

Followed by a Recital by Ian Tracey at 19:30

Friday 26th June 2009

Swaffham, St Peter & St Paul: Recital by Brian Lincoln on Makin organ, 19:30

Saturday 4th July 2009

Makin Mixbury Open Day, 10:00 - 16:00

Saturday 1st August 2009

Makin Shaw Open Day, 10:00 - 16:00

Saturday 5th September 2009

Makin Mixbury Open Day, 10:00 - 16:00

Wednesday 16th September 2009

Battle of Organs Marsden, 19:30

Saturday 10th October 2009

Autumn Shades 2009, with Professor Ian Tracey, 10:00 - 16:00

Makin Shaw: Details to follow

Saturday 7th November 2009

Makin Mixbury Open Day, 10:00 - 16:00

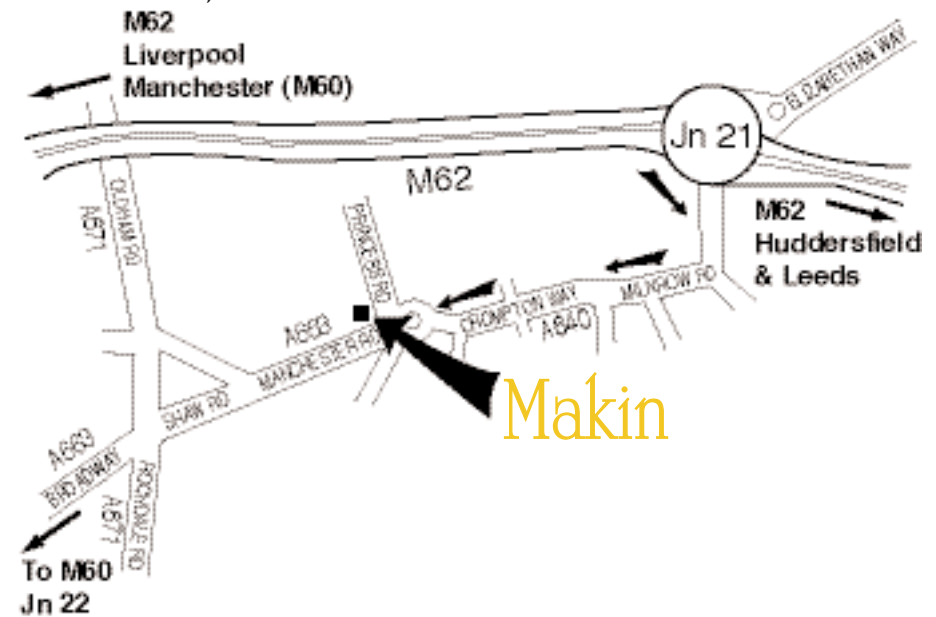
Saturday 21st November 2009

Makin Roadshow, St Elwyn's Church, Hayle, Cornwall 10:00 - 16:00

Saturday 5th December 2009

Makin Shaw Open Day, 10:00 - 16:00

Makin Shaw, Lancashire



Makin Mixbury, Oxford



To: Makin Organs Ltd, FREEPOST NWW7150A, OLDHAM, OL2 7BR.
 Tel: 01706 888100 Fax: 01706 888109 sales@makinorgans.co.uk

Title (Mr/Mrs/Rev/Ms)	Initials
Surname	
Organisation	
Position	
Address	
Postcode	
Tel No	
Fax No	
Mobile No	
E-mail Address	

Please send me a Makin colour brochure.



Please send me a Johannus colour brochure.

